

Fl♥rida KidCare

HEALTH AND DENTAL INSURANCE

2025 General Annual Income Guidelines

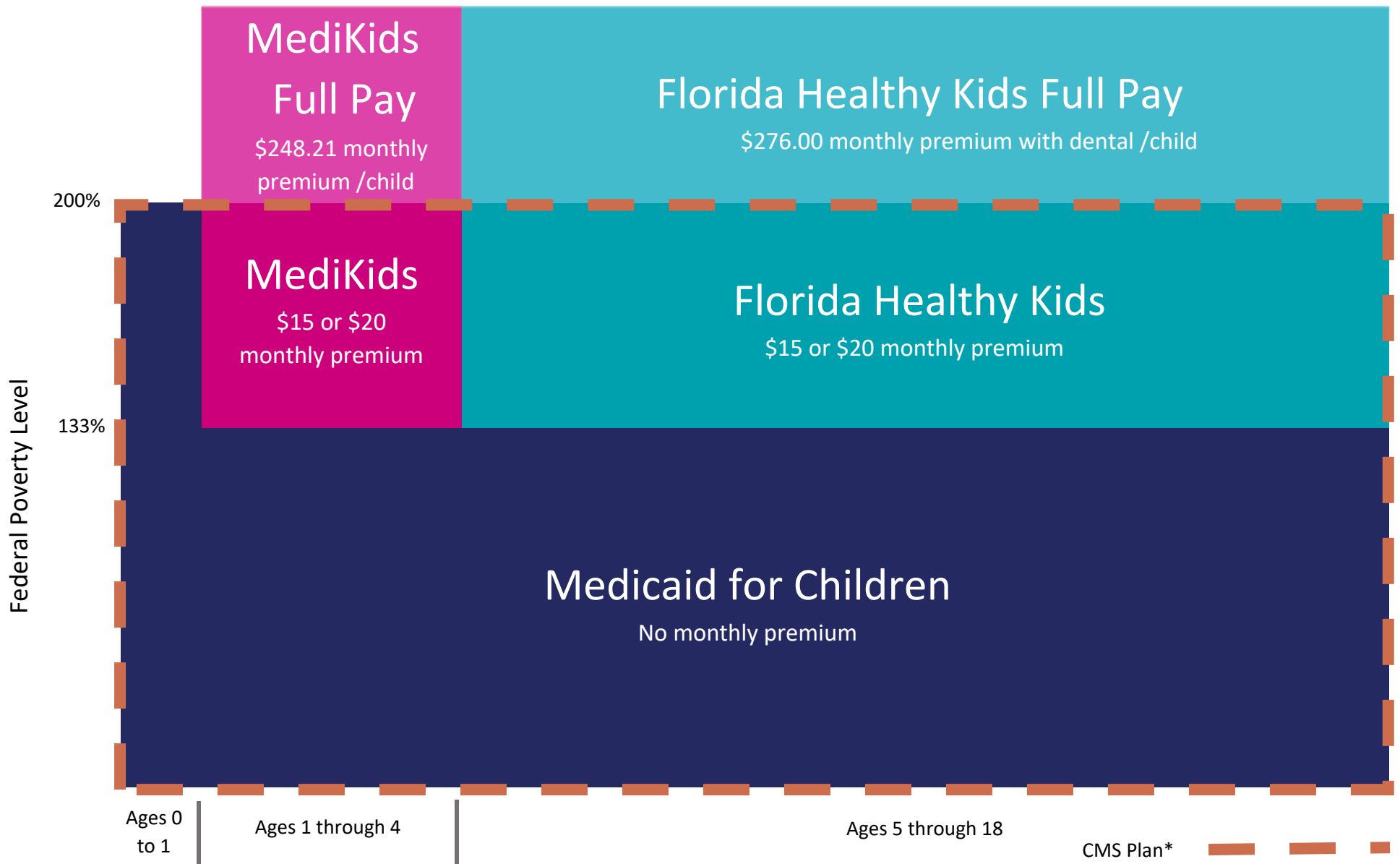
Family Size	Medicaid for Children	MediKids / Florida Healthy Kids / CMS Plan		MediKids / Florida Healthy Kids
	No monthly premium Up to 133% of the FPL	\$15 monthly premium 133.01 – 158% of FPL	\$20 monthly premium 158.01% - 200% of FPL	Full pay plan 200.01% of FPL & over
1	Up to \$20,815.00	\$20,815.01 - \$24,727.00	\$24,727.01 – \$31,300.00	\$31,300.01 & over
2	Up to \$28,130.00	\$28,130.01 – \$33,417.00	\$33,417.01 - \$42,300.00	\$42,300.01 & over
3	Up to \$35,445.00	\$35,445.01 - \$42,107.00	\$42,107.01 – \$53,300.00	\$53,300.01 & over
4	Up to \$42,760.00	\$42,760.01 - \$50,797.00	\$50,797.01 - \$64,300.00	\$64,300.01 & over
5	Up to \$50,075.00	\$50,075.01 - \$59,487.00	\$59,487.01 - \$75,300.00	\$75,300.01 & over
6	Up to \$57,390.00	\$57,390.01 - \$68,177.00	\$68,177.01 - \$86,300.00	\$86,300.01 & over
7	Up to \$64,705.00	\$64,705.01 - \$76,867.00	\$76,867.01 - \$97,300.00	\$97,300.01 & over
8	Up to \$72,020.00	\$72,020.01 - \$85,557.00	\$85,557.01 - \$108,300.00	\$108,300.01 & over
9	Up to \$79,335.00	\$79,335.01 - \$94,247.00	\$94,247.01 - \$119,300.00	\$119,300.01 & over
10	Up to \$86,650.00	\$86,650.01 - \$102,937.00	\$102,937.01 - \$130,300.00	\$130,300.01 & over

These annual income guidelines are for informational purposes only.
Florida KidCare eligibility depends on other factors beyond a family's annual income.

Fl♥rida KidCare

HEALTH AND DENTAL INSURANCE

Program Eligibility Overview



** For a family of four, 133% of the FPL's annual income is \$42,760.00 and 200% is \$64,300.00 as of April 2025

CMS Plan*

*133% to 200% of the FPL have \$15 or \$20 monthly premiums.